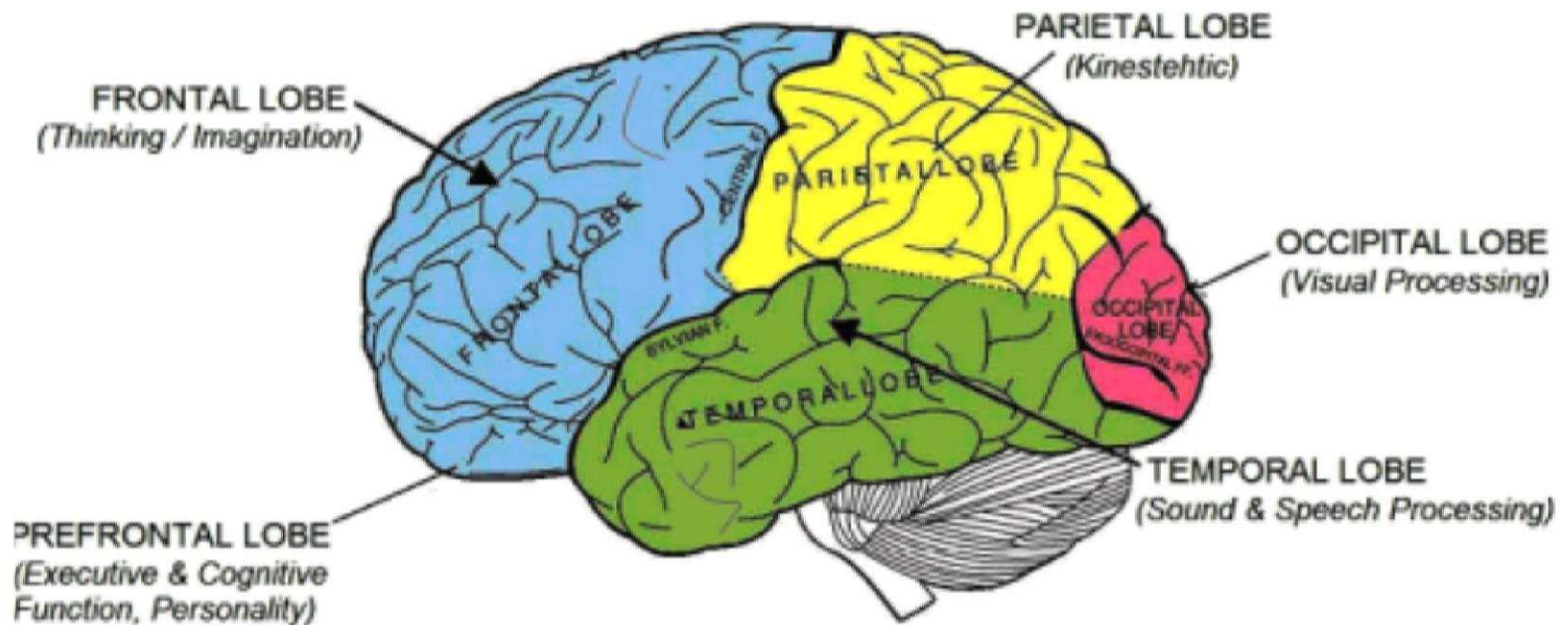




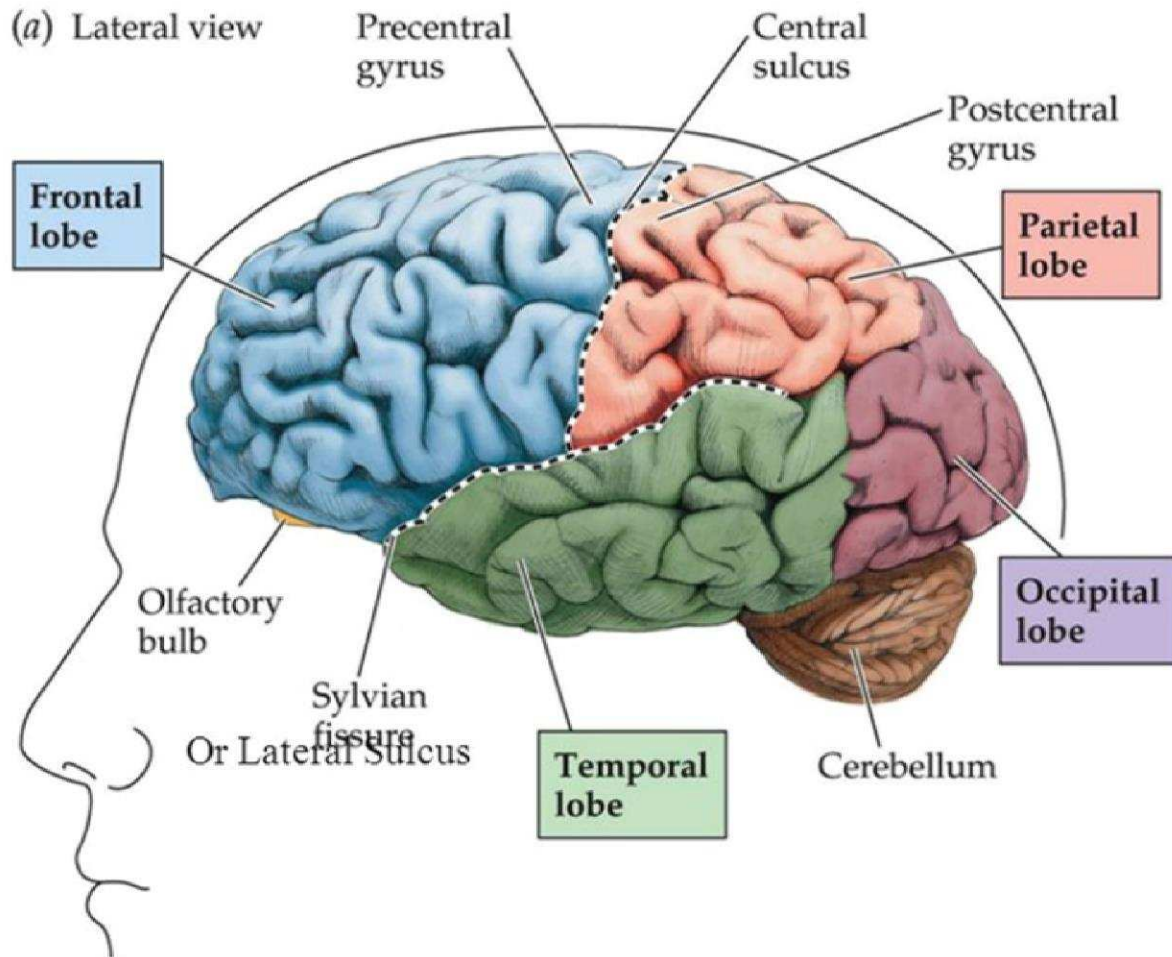
THE MYSTERIOUS BRAIN

**SPECIAL EDUCATION
NEEDS**

BRAIN STRUCTURE



Structural Anatomy



RIGHT SIDE

-Nonverbal
Information

-*Music*
-*Images*

-Drawing

-Construction

-Voice Tones

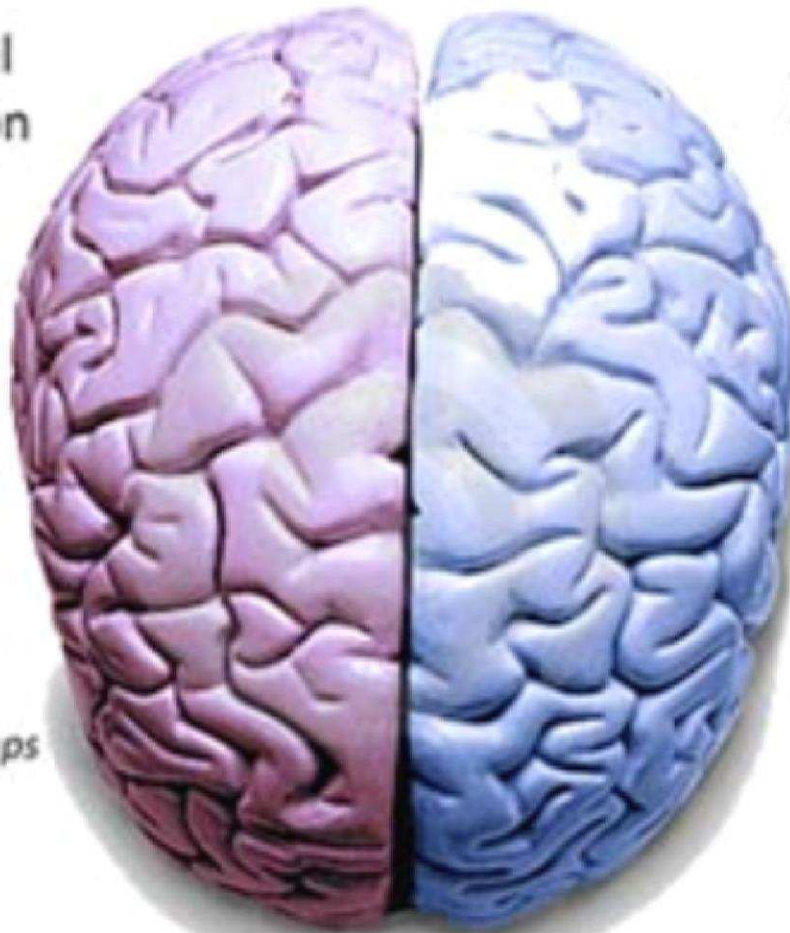
-Creative

-Intuitive

-Spatial
Relationships

-*Faces Shapes Maps*

-Concrete



LEFT SIDE

-Spoken and
Written Language

-Sequencing

-Word Analysis

-Filling Forms

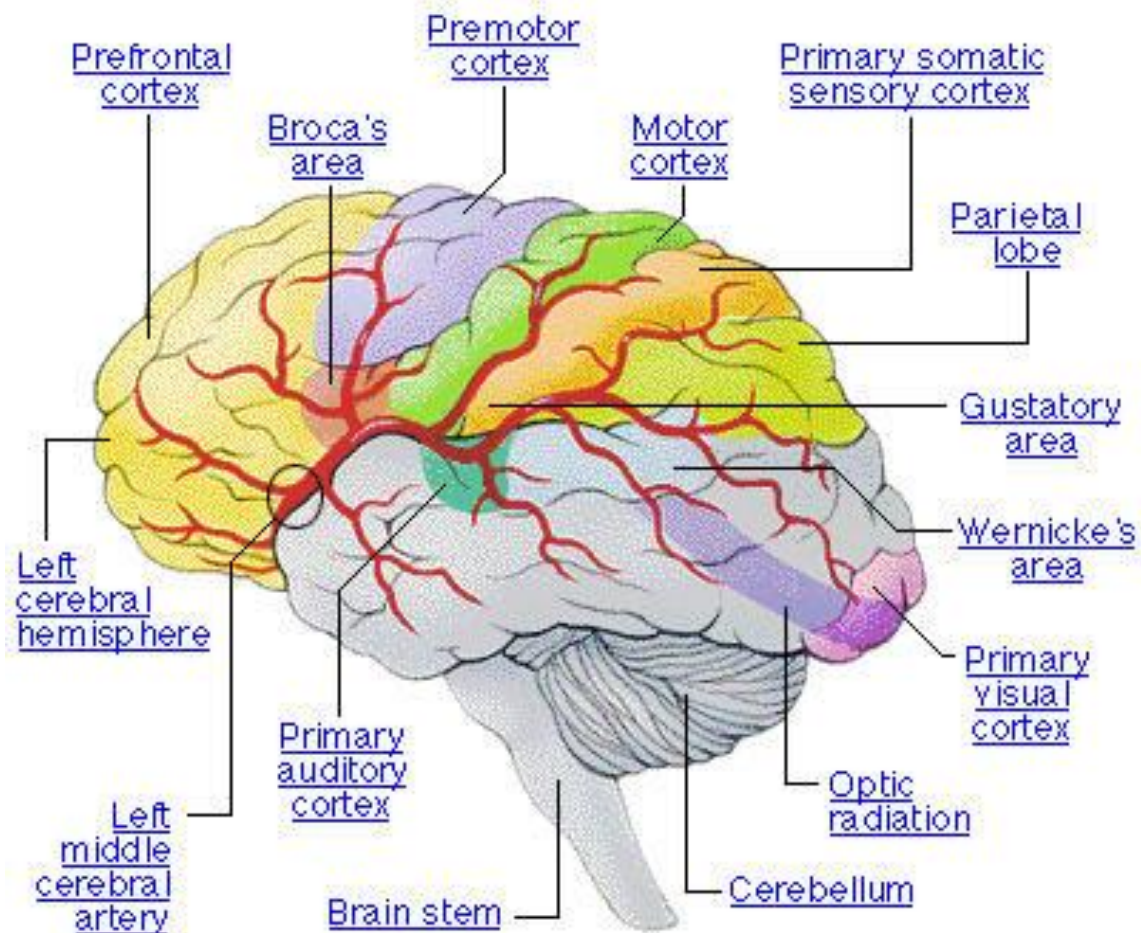
-Numbers

-Letters

-Analytical

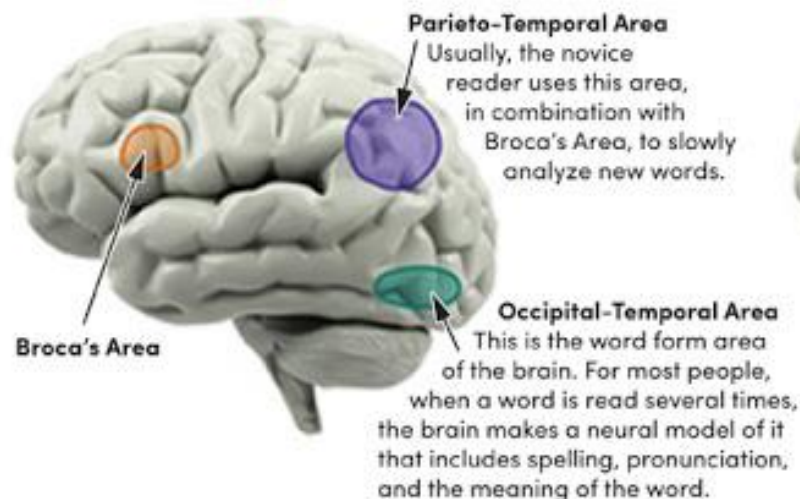
-Logical

-Abstract

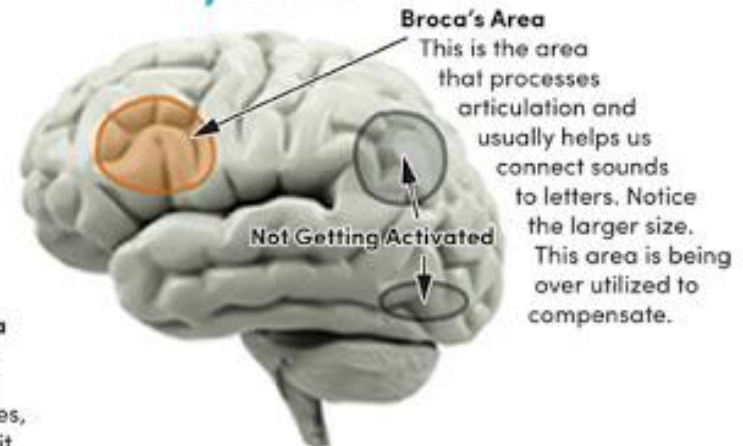


NON-DYSLEXIC BRAIN vs. DYSLEXIC BRAIN WHEN READING

Non-Dyslexic



Dyslexic



Research in neuroscience reveals that the brain functions differently in people with dyslexia than those without it. These structural and neural differences make it more difficult for people with dyslexia to read, spell and write. For example, in the left brain hemisphere, three dominant areas of the brain are usually activated for reading, but in those with dyslexia, only one area of the brain is being stimulated.



THANK YOU

**FOR
CARING**